



## WORD LIST

### building

*gebouw*

The buildings look like sailing boats.



### by bike

*met de fiets, op de fiets*

We go to town by bike.



### by car

*met de auto*

My mum is taking me to school by car because of the heavy rain.



### church

*kerk*

The church was built hundreds of years ago.



### crossroads

*kruising*

Watch out carefully when you cross the crossroads!



### distance

*afstand*

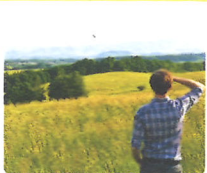
The road sign gives the distance to the city centre.



### far away

*ver weg*

I can't see it, it is too far away.



### fire station

*brandweerkazerne*

The fire fighters are gathered at the fire station.



### left

*links*

We have to turn left to get to the railway station.



### library

*bibliotheek*

I go to the library to get books every week.



### map

*kaart, plattegrond*

We use a map to find our way.



### on foot

*te voet, lopend*

We like to go to town on foot.



### park

*park*

We like to picnic in the park on sunny days.



### police station

*politiebureau*

The police cars are in front of the police station.



### public transport

*openbaar vervoer*

Buses are forms of public transport.



### railway station

*treinstation*

Hundreds of trains a day pass through the railway station.



### right

*rechts*

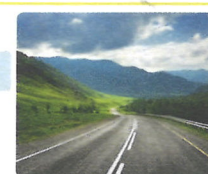
Look right to see if it is safe to cross the street.



### road

*weg*

We are on a road to nowhere.



### roundabout

*rotonde*

There is not much traffic on the roundabout.



### straight on

*rechtdoor*

Go straight on to the end of the road.



### town hall

*gemeentehuis, stadhuis*

We went to the town hall to get new passports.



### traffic jam

*file, verkeersopstopping*

Because of the traffic jam, my mum was late for work.



### traffic sign

*verkeersbord*

What do the traffic signs tell us?



### to cross

*oversteken*

You can use the zebra crossing to cross the street here.



### to follow

*volgen*

Follow me to the park.



### to turn

*draaien*

You are not allowed to turn here.



### Can you tell me how to get to ...?

*Hoe kom ik bij ...?*

Can you tell me how to get to the fire station?



### Can you tell me the way to ...?

*Wat is de weg naar ...?*

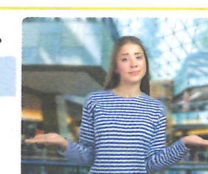
Can you tell me the way to the museum?



### I'm sorry, I can't help you.

*Sorry, ik kan je niet helpen.*

I'm sorry, I can't help you to find the town hall.



### Take the first street on your ...

*Neem de eerste straat ...*

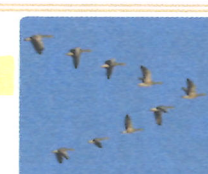
Take the first street on your left.



### bird migration

*vogeltrek*

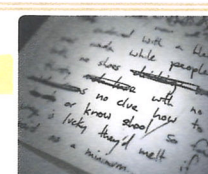
Bird migration is often in autumn or early winter.



### lyrics

*liedtekst*

He wrote down the lyrics to his love song.



### to navigate

*navigeren, de weg vinden*

Sometimes people used a compass to navigate.

